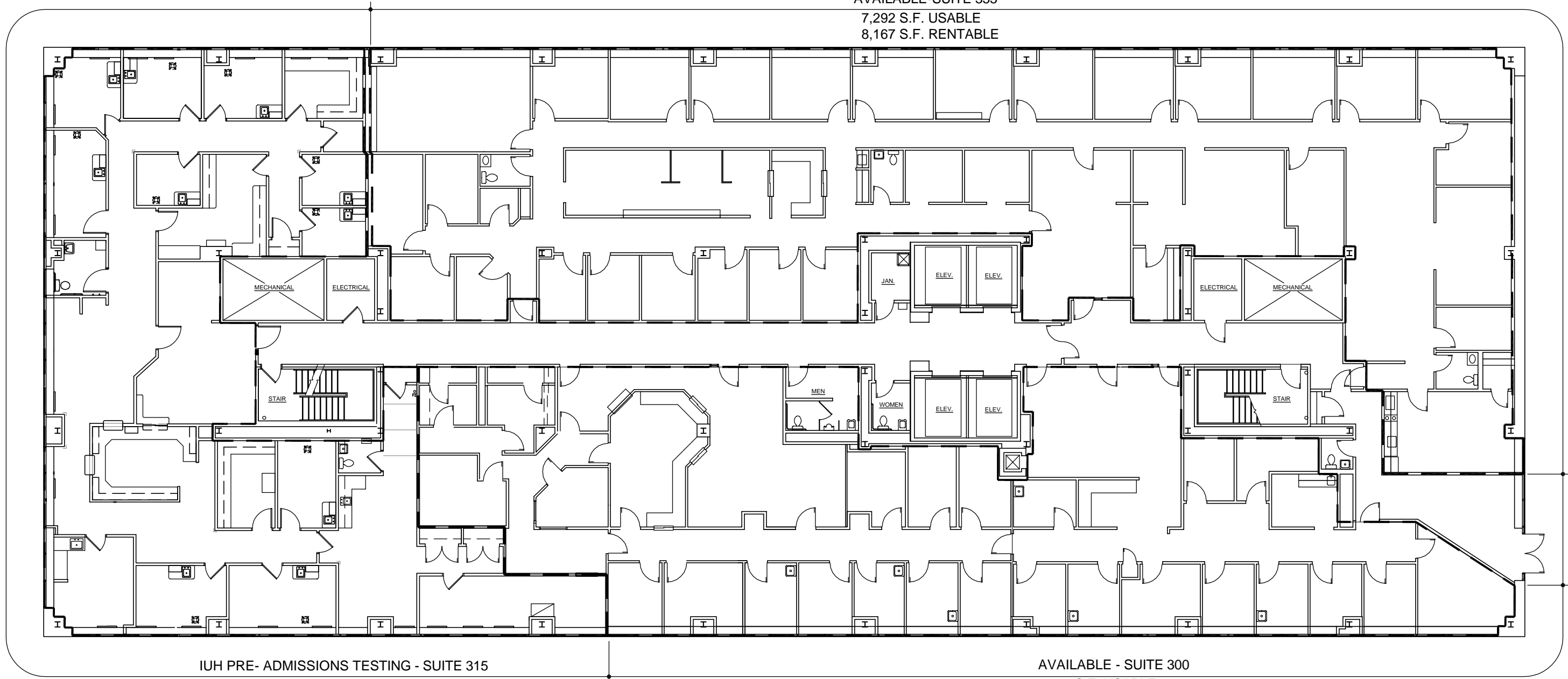


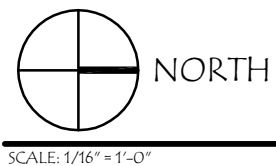
AVAILABLE-SUITE 355
 7,292 S.F. USABLE
 8,167 S.F. RENTABLE



IUH PRE- ADMISSIONS TESTING - SUITE 315
 4,642 S.F. USABLE
 5,199 S.F. RENTABLE

AVAILABLE - SUITE 300
 5,735 S.F. USABLE
 6,423 S.F. RENTABLE

THIRD FLOOR PLAN
 SCALE: 1/8" = 1'-0"



THIRD FLOOR 
 METHODIST PROFESSIONAL CENTER 1

METHODIST PROFESSIONAL CENTER 1
 1801 NORTH SENATE BOULEVARD
 INDIANAPOLIS, IN 46202
 PHONE 317.573.6045

08/09/2019

STUDIO THREE DESIGN 
 Architecture • Interior Design
 8604 Allisonville Road
 Suite 330
 Indianapolis, IN 46250
 Phone: (317) 595.1000
 Fax: (317) 572.1236