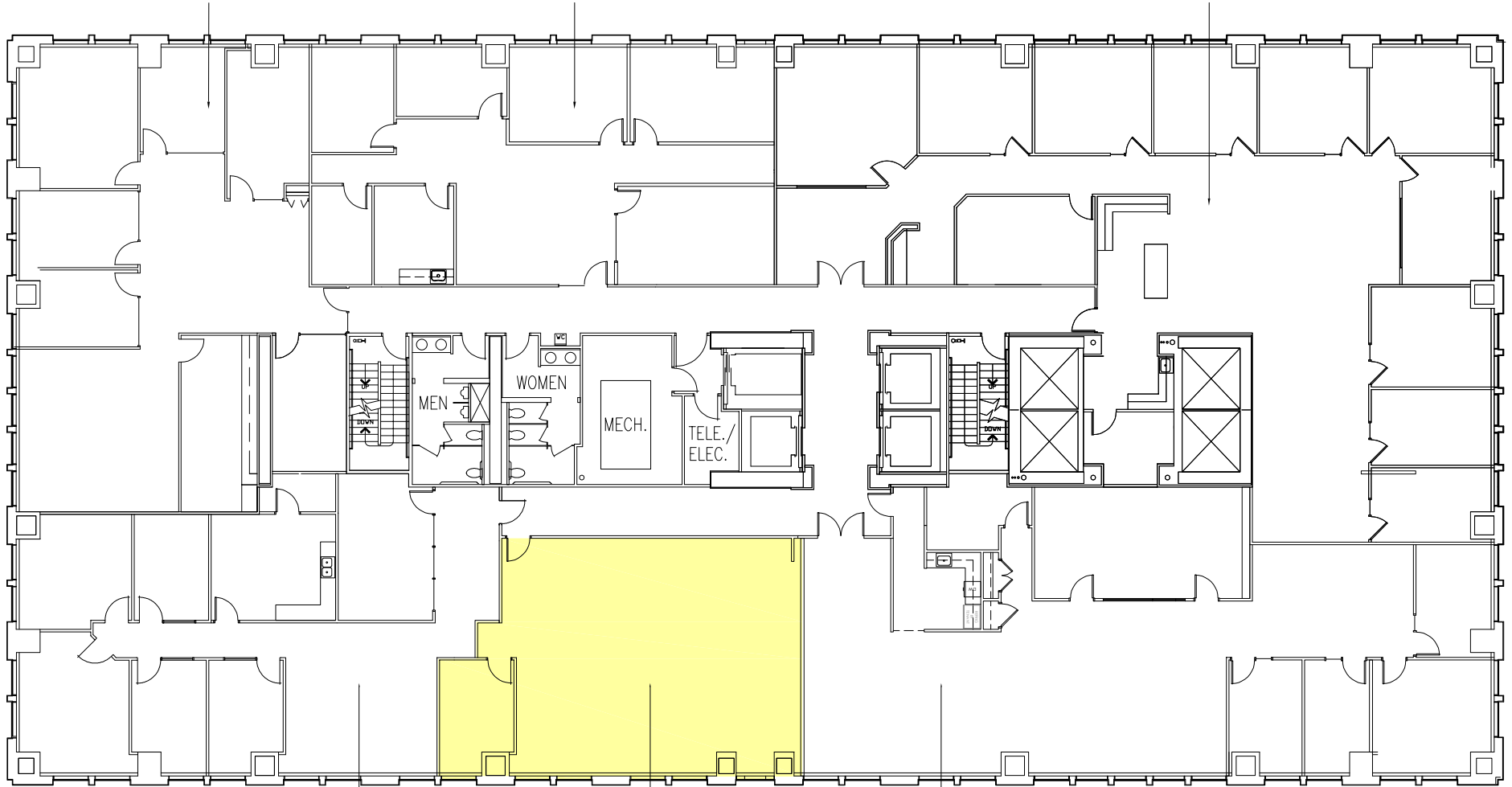


HILL, KNOTTS &  
GOLDMAN, LLC  
SUITE 1290  
2,827 RSF

ROCHELLE  
McCULLOUGH  
SUITE 1260  
2,278 RSF

ASSOCIATED BANK  
SUITE 1200  
5,102 RSF



PLUNKETT COONEY, PC  
SUITE 1250  
2,559 RSF

AVAILABLE  
SUITE 1240  
1,580 RSF

CLEAR RESULT  
SUITE 1220  
3,716 RSF

# 12TH FLOOR

300 N. MERIDIAN ST | INDIANAPOLIS, IN



DATE: 05.19.26  
SCALE: NTS