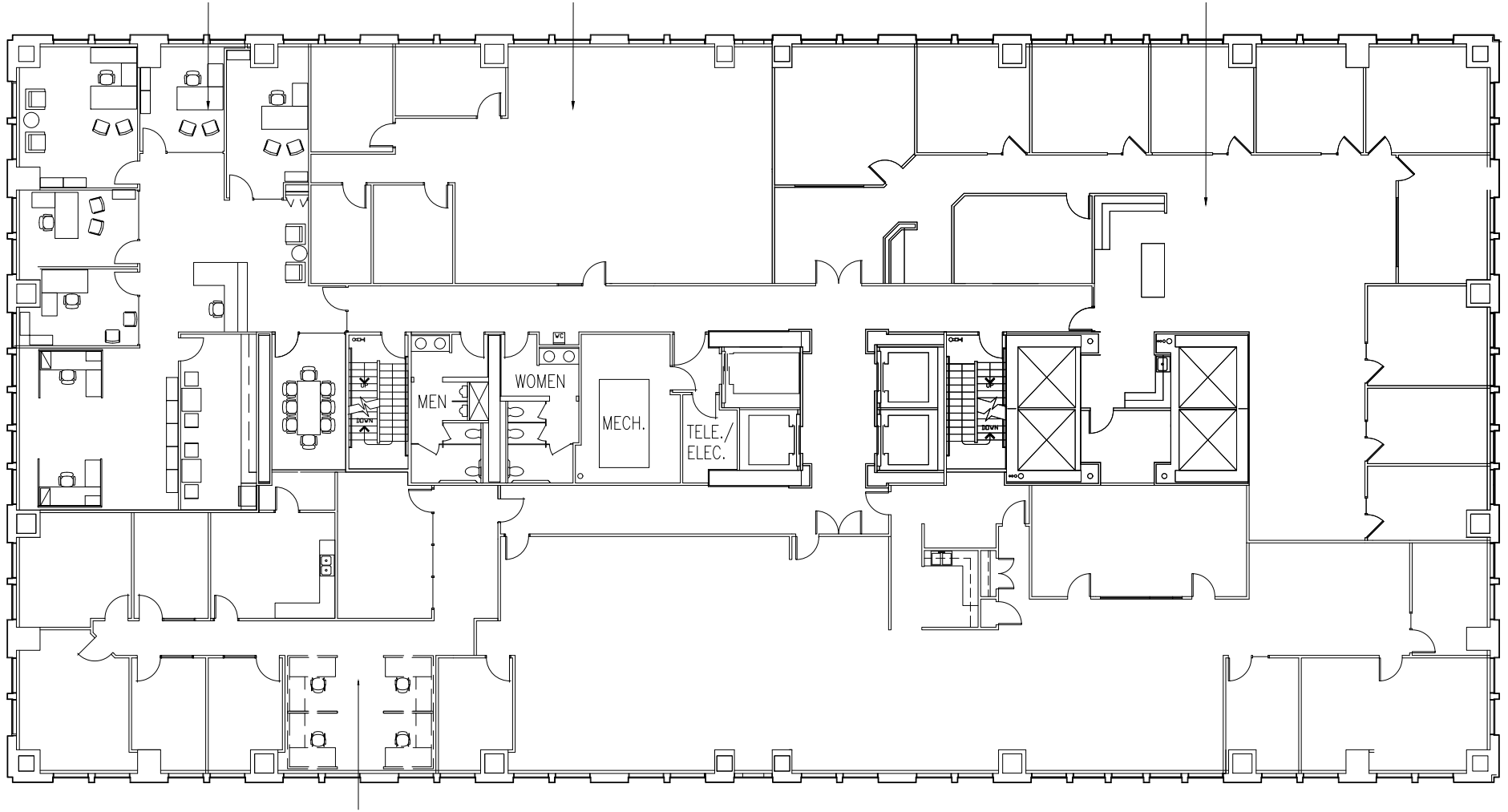


HILL, KNOTTS &
GOLDMAN, LLC
SUITE 1290
2,827 RSF

HOOKSET SOLUTIONS
SUITE 1260
2,278 RSF

ASSOCIATED BANK
SUITE 1200
5,102 RSF



PLUNKETT COONEY, PC
SUITE 1250
2,559 RSF

AVAILABLE
SUITE 1220
5,275 RSF

12TH FLOOR

300 N. MERIDIAN ST | INDIANAPOLIS, IN



DATE: 02.14.24
SCALE: NTS